



# GDC for South East Europe | MOSTAR

By Dr. Elma Durmisevic

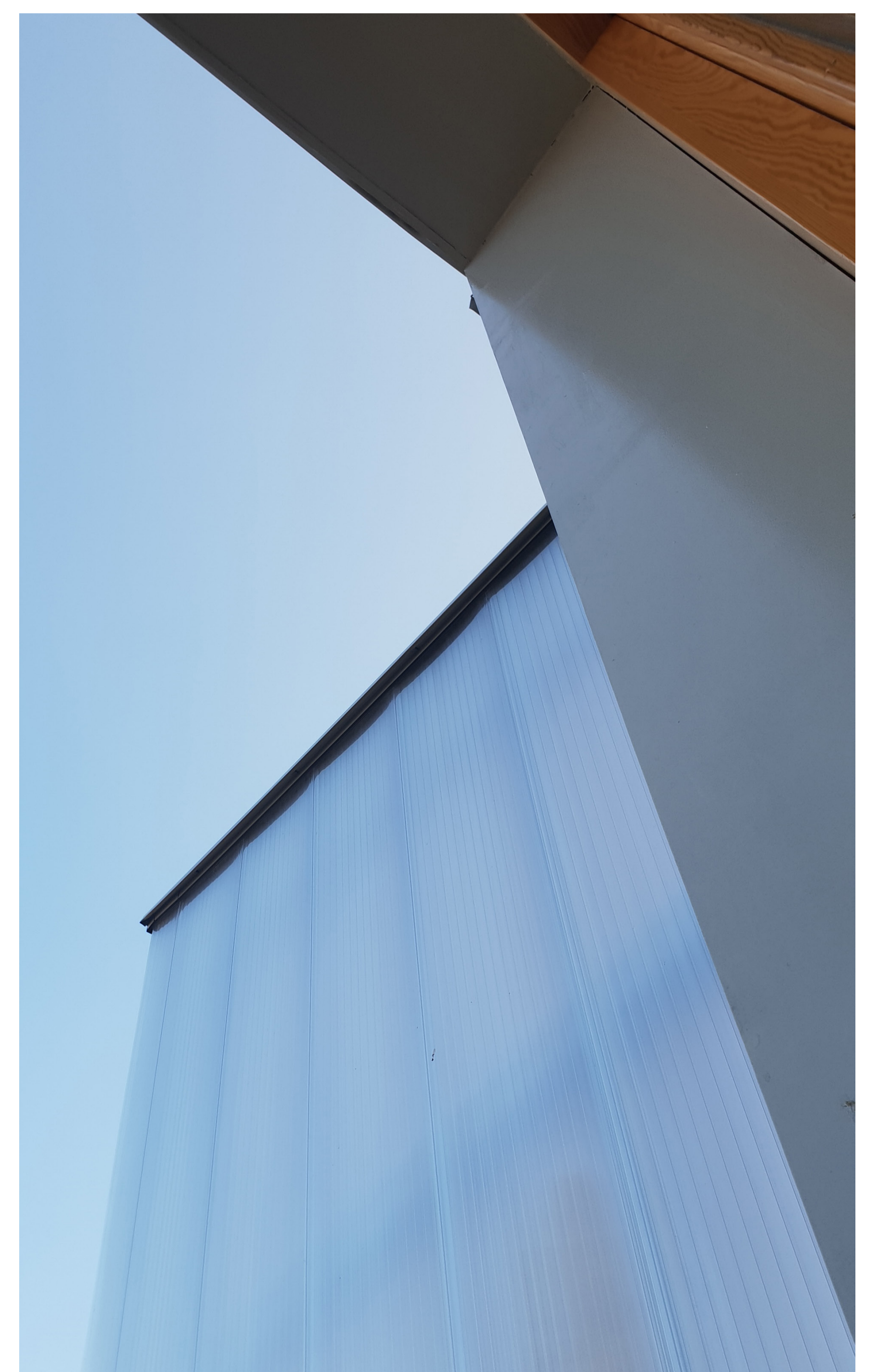
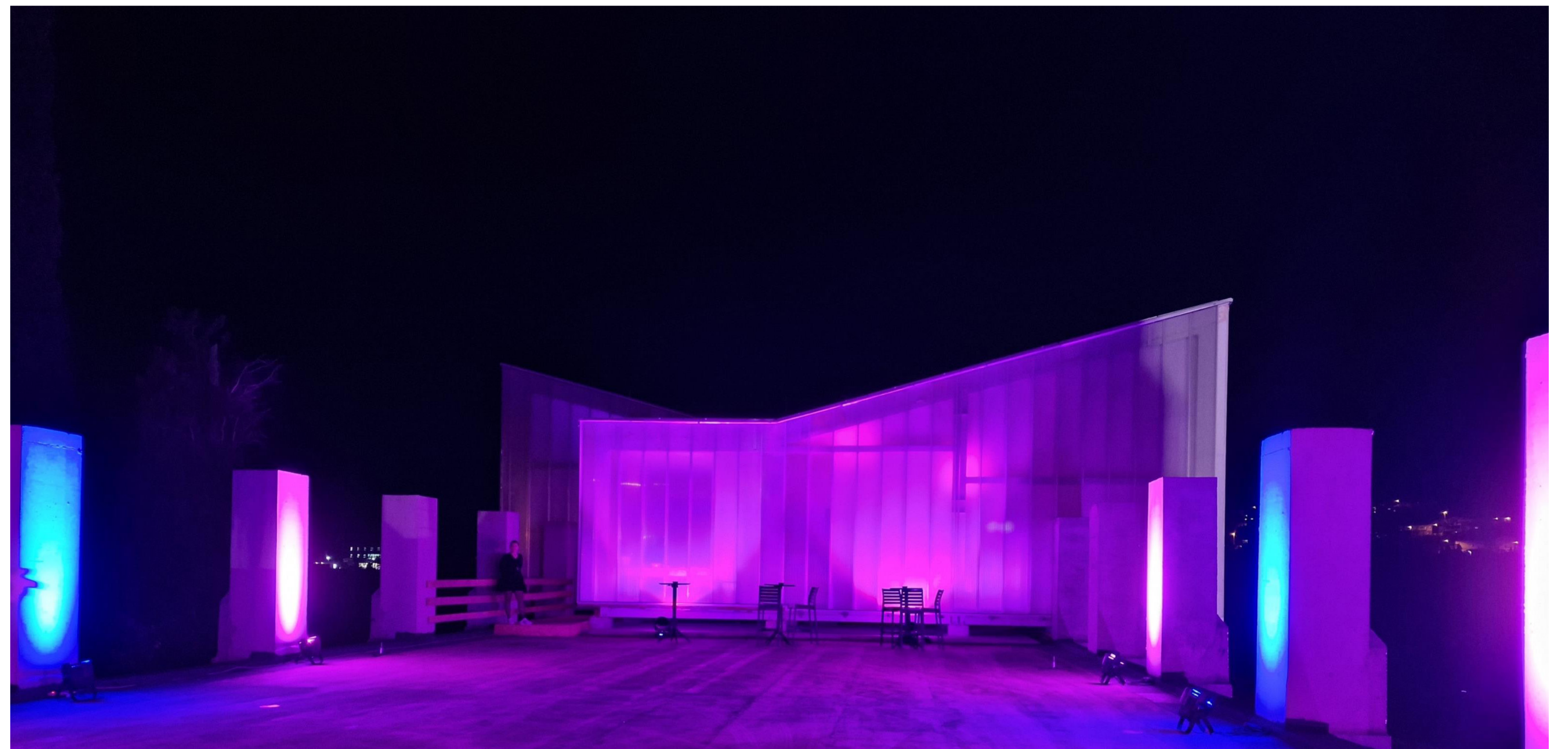
The **Green Design Centre (GDC)** for Southeast Europe in Mostar is an innovation park for circular buildings and sustainable development, a creative hub that brings together creative and production industries around Green and Reversible Building Design concepts.

The GDC acts as a design laboratory and construction innovation platform.

It transforms a former military camp and historic industrial zone from the early 20th century into a nucleus of Circular Green Building innovation and socio-cultural cohesion, introducing a new identity to the space and the city.

**Creator and founder** of the Green Design Centre, Elma Durmisevic, SGDF, GTB Lab, 4D architects

**Partners** : City of Mostar, EU BAMB Consortium, University of Dzemal Bjedic, University of Mostar, Industrial Cluster





[www.sarjevogreendesign.com](http://www.sarjevogreendesign.com)

# GDC for South East Europe | MOSTAR

By Dr. Elma Durmisevic



## Green Design Center | GDC





[www.sarajevogreendesign.com](http://www.sarajevogreendesign.com)

# Circular & Sustainable Innovation Hub

By Dr. Elma Durmisevic



The development of GDC presents reuse of a old ruin as a platform for construction of dynamic and exchangeable modern units demonstrating new approaches in design that enables disassembly, transformation and reuse of all its parts.



GDC is developed with local stakeholders bringing together a steel manufacturer, and a wood cluster as well as a local producer of installation components around new concepts of construction.

GDC demonstrated that a circular design approach can result in:

- 93% waste reduction
- Energy neutral building
- 50% CO2 reduction
- Elimination of energy needed for lighting due to integration of natural light



# GREEN DESIGN CENTER MOSTAR

[www.sarajevogreendesign.com](http://www.sarajevogreendesign.com)



## GDC Ambition

- Development and showcasing of innovative circular/green building concepts
- Create an interaction platform and meeting space between community, innovation and creativity
- Bring innovation closer to the community by interactive IT platform
- bring knowledge institutions, schools, designers and production industry together
- Promote research that will inform decisionmakers on scoring and evaluating the performance circular building
- new meeting and expo place that will have an educational, entertainment and innovation agenda



**Architect:** Elma Durmisvic,  
4D architects

**Structural design:** ABT

**Installation design:** ABT

**Contractor:** Kostrukcije

**Services:** Alfatherm

**Supervision:** ARHIPLUS

EU Horizon2020 Pilot demonstrating reversible building design principles

